

**DEVELOPMENT, USE AND MAINTENANCE
AGREEMENT ON THE PART OF THE
CROSSTOWN TRAIL WHICH IS LOCATED ON
HOPKINS COUNTY CIVIC CENTER
PROPERTY.**

This agreement is made this 11 day of December, 2017 between CITY OF SULPHUR SPRINGS ("CITY") and HOPKINS COUNTY ("COUNTY") TEXAS.

Pursuant to the authority granted by the "Texas Interlocal Cooperation Act," Chapter 791 Texas Government Code providing for the cooperation between local governmental bodies, the parties hereto, in consideration of the premises and mutual promises contained herein, agree as follows:

WHEREAS, the contract is made under the authority of Sections 791.001-791.029 of the Texas Government Code; and

WHEREAS, the parties, in performing governmental functions or in paying for the performance of governmental functions hereunder shall make that performance or those payments from current revenues legally available to that party; and

WHEREAS, the governing bodies of each party find that the subject of this contract is necessary for the benefit of the public and that each party has the legal authority to perform and to provide the governmental function or service which is the subject matter of this contract; furthermore, the governing bodies find that the performance of this contract is in the common interest of both parties; and that the division of cost fairly compensates the performing party for the services under this contract; and

Whereas, the City of Sulphur Springs received a federally funded Transportation Alternative Program Grant through TxDOT; and

Whereas the purpose of the grant is to provide pedestrian connectivity between different parts of Sulphur Springs which are now difficult for pedestrians to access; and

Whereas part of the proposed trail will connect the sidewalk which leads from Buford Park down Connally to the high school by running up the east side of the civic center across the adjacent bridge and across to the front door of the arena; and

Whereas it is in the interest of both the City of Sulphur Springs and Hopkins County to use these grant funds to build this sidewalk.

NOW, THEREFORE, CITY and COUNTY, for the mutual consideration stated herein, agree as follows:

By adoption of and entry into this Agreement, Hopkins County grants permission to the City of Sulphur Springs to build the sidewalk per the terms of the grant numbered CSJ: 0901-28-

090. The city shall build the sidewalk per the plans attached, however, retaining the right to make field adjustments to those plans as necessary.

Construction activity is dependent on TxDOT and Federal Highway Administration Funding which has been granted and a State Letter of Authority (SLOA) received. Upon completion of the project, Hopkins County hereby agrees that it will assume responsibility for maintenance of the project components located upon its property.

The City of Sulphur Springs and Hopkins County covenant that the project will be dedicated for public use for a period of time not less than ten years after project completion and commensurate with the federal investment as outlined in 43 Texas Admin. Code 11.317.

The construction plans are attached hereto and incorporated herein as a part of this agreement.

General Provisions:

The Parties agree to comply fully with all applicable federal, state, and local statutes, ordinances, rules, and regulations in connection with the programs contemplated under this Agreement. This Agreement is subject to all applicable present and future valid laws governing such programs.

This Agreement shall be governed by the law of the State of Texas and venue shall be in Hopkins County, Texas.

This Agreement contains the entire agreement of the Parties hereto with respect to the matters covered by its terms, and it may not be modified in any manner without the express written consent of the Parties.

If any term(s) or provision(s) of this Agreement are held by a court of competent jurisdiction to be invalid, void, or unenforceable, the remainder of the provisions of this Agreement shall remain in full force and effect.

The Parties to this Agreement expressly acknowledge and agree that all monies paid pursuant to this Agreement shall be paid from legally appropriated and budgeted available funds for the current fiscal year of each such entity.

No jointly owned property shall be created by this agreement and, therefore, no provision to dispose of jointly held property is required.

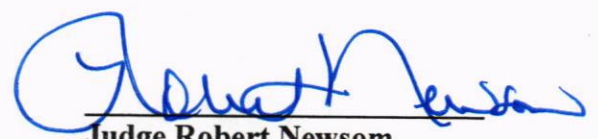
No Party to this Agreement waives or relinquishes any immunity or defense on behalf of themselves, their directors, officers, employees, and agents as a result of its execution of this Agreement and performance of the functions and obligations described herein.

This Agreement may be negotiated and transmitted between the Parties by electronic means and the terms and conditions agreed to are binding upon the Parties.

Executed this date; 11th December of ~~October~~, 2017.

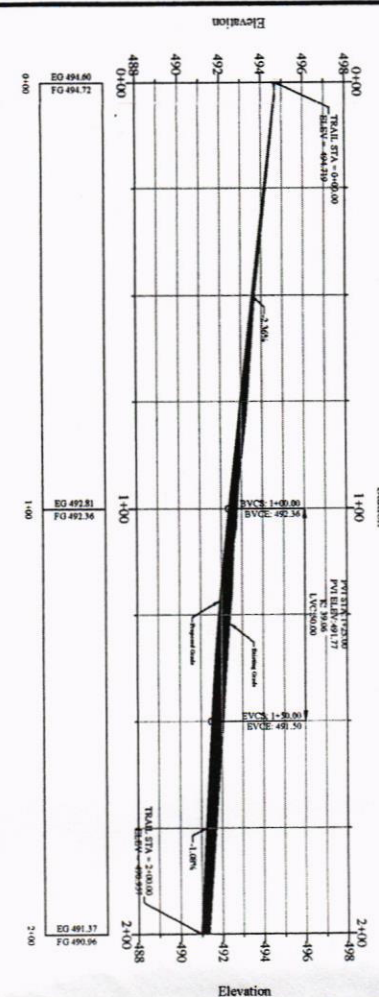
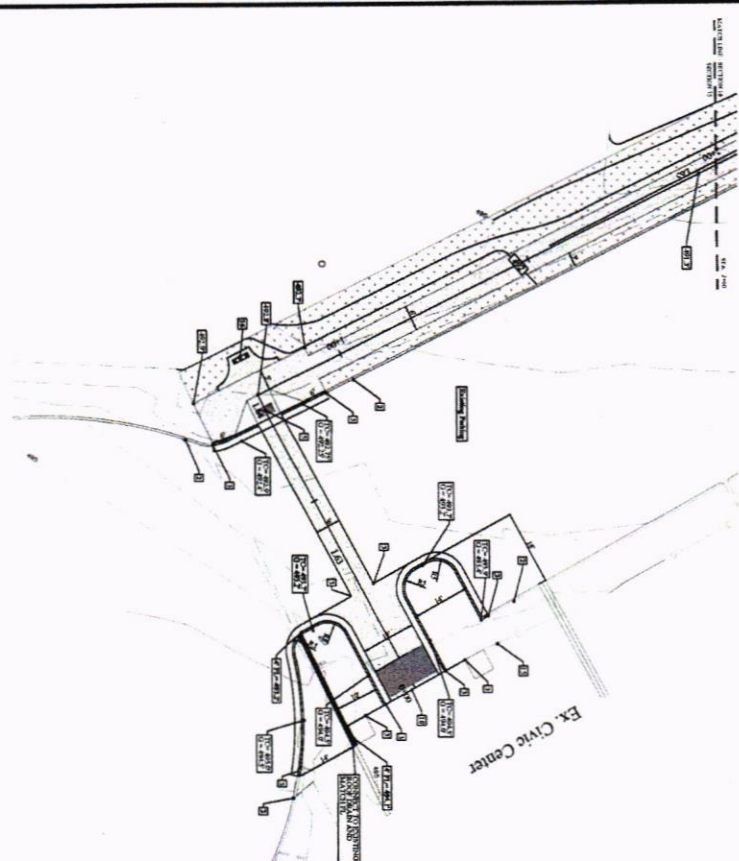


Marc Maxwell
City Manager



Judge Robert Newsom
12-11-17

Exhibit "A"



REFERENCE BENCHMARK:
 THE BOUNDARY SURVEY, TOPOGRAPHIC SURVEY BENCHMARKS AND LOCATION OF ALL EXISTING UTILITIES, STRUCTURES, TREES AND IMPROVEMENTS WERE PROVIDED BY CONSULTING ENGINEER, MHS PLANNING & DESIGN, L.L.C.

T.M. #1
 A POINT LOCATED NEAR THE INTERSECTION OF MULBERRY STREET CONTROL POINT LOCATED NEAR THE INTERSECTION OF MULBERRY STREET APPROXIMATELY 65 FEET NORTH OF THE CORNER OF THE CONALLA STREET NORTHERN BACK OF CURB
 X = 710990.68
 Y = 710990.68
 Z = 468.71

T.M. #2
 A POINT LOCATED NEAR THE INTERSECTION OF LIQUOR STREET APPROXIMATELY 200 FEET NORTH OF THE CORNER OF LIQUOR STREET APPROXIMATELY 65 FEET NORTH OF THE CORNER OF THE CONALLA STREET NORTHERN BACK OF CURB
 X = 710990.68
 Y = 710990.68
 Z = 468.71

T.M. #3
 A POINT LOCATED NEAR THE INTERSECTION OF LIQUOR STREET APPROXIMATELY 200 FEET NORTH OF THE CORNER OF LIQUOR STREET APPROXIMATELY 65 FEET NORTH OF THE CORNER OF THE CONALLA STREET NORTHERN BACK OF CURB
 X = 710990.68
 Y = 710990.68
 Z = 468.71

T.M. #4
 A POINT LOCATED NEAR THE INTERSECTION OF LIQUOR STREET APPROXIMATELY 200 FEET NORTH OF THE CORNER OF LIQUOR STREET APPROXIMATELY 65 FEET NORTH OF THE CORNER OF THE CONALLA STREET NORTHERN BACK OF CURB
 X = 710990.68
 Y = 710990.68
 Z = 468.71

T.M. #5
 A POINT LOCATED NEAR THE INTERSECTION OF LIQUOR STREET APPROXIMATELY 200 FEET NORTH OF THE CORNER OF LIQUOR STREET APPROXIMATELY 65 FEET NORTH OF THE CORNER OF THE CONALLA STREET NORTHERN BACK OF CURB
 X = 710990.68
 Y = 710990.68
 Z = 468.71

T.M. #6
 A POINT LOCATED NEAR THE INTERSECTION OF LIQUOR STREET APPROXIMATELY 200 FEET NORTH OF THE CORNER OF LIQUOR STREET APPROXIMATELY 65 FEET NORTH OF THE CORNER OF THE CONALLA STREET NORTHERN BACK OF CURB
 X = 710990.68
 Y = 710990.68
 Z = 468.71

T.M. #7
 A POINT LOCATED NEAR THE INTERSECTION OF LIQUOR STREET APPROXIMATELY 200 FEET NORTH OF THE CORNER OF LIQUOR STREET APPROXIMATELY 65 FEET NORTH OF THE CORNER OF THE CONALLA STREET NORTHERN BACK OF CURB
 X = 710990.68
 Y = 710990.68
 Z = 468.71

T.M. #8
 A POINT LOCATED NEAR THE INTERSECTION OF LIQUOR STREET APPROXIMATELY 200 FEET NORTH OF THE CORNER OF LIQUOR STREET APPROXIMATELY 65 FEET NORTH OF THE CORNER OF THE CONALLA STREET NORTHERN BACK OF CURB
 X = 710990.68
 Y = 710990.68
 Z = 468.71

T.M. #9
 A POINT LOCATED NEAR THE INTERSECTION OF LIQUOR STREET APPROXIMATELY 200 FEET NORTH OF THE CORNER OF LIQUOR STREET APPROXIMATELY 65 FEET NORTH OF THE CORNER OF THE CONALLA STREET NORTHERN BACK OF CURB
 X = 710990.68
 Y = 710990.68
 Z = 468.71

T.M. #10
 A POINT LOCATED NEAR THE INTERSECTION OF LIQUOR STREET APPROXIMATELY 200 FEET NORTH OF THE CORNER OF LIQUOR STREET APPROXIMATELY 65 FEET NORTH OF THE CORNER OF THE CONALLA STREET NORTHERN BACK OF CURB
 X = 710990.68
 Y = 710990.68
 Z = 468.71

T.M. #11
 A POINT LOCATED NEAR THE INTERSECTION OF LIQUOR STREET APPROXIMATELY 200 FEET NORTH OF THE CORNER OF LIQUOR STREET APPROXIMATELY 65 FEET NORTH OF THE CORNER OF THE CONALLA STREET NORTHERN BACK OF CURB
 X = 710990.68
 Y = 710990.68
 Z = 468.71

T.M. #12
 A POINT LOCATED NEAR THE INTERSECTION OF LIQUOR STREET APPROXIMATELY 200 FEET NORTH OF THE CORNER OF LIQUOR STREET APPROXIMATELY 65 FEET NORTH OF THE CORNER OF THE CONALLA STREET NORTHERN BACK OF CURB
 X = 710990.68
 Y = 710990.68
 Z = 468.71

T.M. #13
 A POINT LOCATED NEAR THE INTERSECTION OF LIQUOR STREET APPROXIMATELY 200 FEET NORTH OF THE CORNER OF LIQUOR STREET APPROXIMATELY 65 FEET NORTH OF THE CORNER OF THE CONALLA STREET NORTHERN BACK OF CURB
 X = 710990.68
 Y = 710990.68
 Z = 468.71

T.M. #14
 A POINT LOCATED NEAR THE INTERSECTION OF LIQUOR STREET APPROXIMATELY 200 FEET NORTH OF THE CORNER OF LIQUOR STREET APPROXIMATELY 65 FEET NORTH OF THE CORNER OF THE CONALLA STREET NORTHERN BACK OF CURB
 X = 710990.68
 Y = 710990.68
 Z = 468.71

T.M. #15
 A POINT LOCATED NEAR THE INTERSECTION OF LIQUOR STREET APPROXIMATELY 200 FEET NORTH OF THE CORNER OF LIQUOR STREET APPROXIMATELY 65 FEET NORTH OF THE CORNER OF THE CONALLA STREET NORTHERN BACK OF CURB
 X = 710990.68
 Y = 710990.68
 Z = 468.71

T.M. #16
 A POINT LOCATED NEAR THE INTERSECTION OF LIQUOR STREET APPROXIMATELY 200 FEET NORTH OF THE CORNER OF LIQUOR STREET APPROXIMATELY 65 FEET NORTH OF THE CORNER OF THE CONALLA STREET NORTHERN BACK OF CURB
 X = 710990.68
 Y = 710990.68
 Z = 468.71

T.M. #17
 A POINT LOCATED NEAR THE INTERSECTION OF LIQUOR STREET APPROXIMATELY 200 FEET NORTH OF THE CORNER OF LIQUOR STREET APPROXIMATELY 65 FEET NORTH OF THE CORNER OF THE CONALLA STREET NORTHERN BACK OF CURB
 X = 710990.68
 Y = 710990.68
 Z = 468.71

T.M. #18
 A POINT LOCATED NEAR THE INTERSECTION OF LIQUOR STREET APPROXIMATELY 200 FEET NORTH OF THE CORNER OF LIQUOR STREET APPROXIMATELY 65 FEET NORTH OF THE CORNER OF THE CONALLA STREET NORTHERN BACK OF CURB
 X = 710990.68
 Y = 710990.68
 Z = 468.71

T.M. #19
 A POINT LOCATED NEAR THE INTERSECTION OF LIQUOR STREET APPROXIMATELY 200 FEET NORTH OF THE CORNER OF LIQUOR STREET APPROXIMATELY 65 FEET NORTH OF THE CORNER OF THE CONALLA STREET NORTHERN BACK OF CURB
 X = 710990.68
 Y = 710990.68
 Z = 468.71

T.M. #20
 A POINT LOCATED NEAR THE INTERSECTION OF LIQUOR STREET APPROXIMATELY 200 FEET NORTH OF THE CORNER OF LIQUOR STREET APPROXIMATELY 65 FEET NORTH OF THE CORNER OF THE CONALLA STREET NORTHERN BACK OF CURB
 X = 710990.68
 Y = 710990.68
 Z = 468.71

T.M. #21
 A POINT LOCATED NEAR THE INTERSECTION OF LIQUOR STREET APPROXIMATELY 200 FEET NORTH OF THE CORNER OF LIQUOR STREET APPROXIMATELY 65 FEET NORTH OF THE CORNER OF THE CONALLA STREET NORTHERN BACK OF CURB
 X = 710990.68
 Y = 710990.68
 Z = 468.71

T.M. #22
 A POINT LOCATED NEAR THE INTERSECTION OF LIQUOR STREET APPROXIMATELY 200 FEET NORTH OF THE CORNER OF LIQUOR STREET APPROXIMATELY 65 FEET NORTH OF THE CORNER OF THE CONALLA STREET NORTHERN BACK OF CURB
 X = 710990.68
 Y = 710990.68
 Z = 468.71

T.M. #23
 A POINT LOCATED NEAR THE INTERSECTION OF LIQUOR STREET APPROXIMATELY 200 FEET NORTH OF THE CORNER OF LIQUOR STREET APPROXIMATELY 65 FEET NORTH OF THE CORNER OF THE CONALLA STREET NORTHERN BACK OF CURB
 X = 710990.68
 Y = 710990.68
 Z = 468.71

T.M. #24
 A POINT LOCATED NEAR THE INTERSECTION OF LIQUOR STREET APPROXIMATELY 200 FEET NORTH OF THE CORNER OF LIQUOR STREET APPROXIMATELY 65 FEET NORTH OF THE CORNER OF THE CONALLA STREET NORTHERN BACK OF CURB
 X = 710990.68
 Y = 710990.68
 Z = 468.71

T.M. #25
 A POINT LOCATED NEAR THE INTERSECTION OF LIQUOR STREET APPROXIMATELY 200 FEET NORTH OF THE CORNER OF LIQUOR STREET APPROXIMATELY 65 FEET NORTH OF THE CORNER OF THE CONALLA STREET NORTHERN BACK OF CURB
 X = 710990.68
 Y = 710990.68
 Z = 468.71

T.M. #26
 A POINT LOCATED NEAR THE INTERSECTION OF LIQUOR STREET APPROXIMATELY 200 FEET NORTH OF THE CORNER OF LIQUOR STREET APPROXIMATELY 65 FEET NORTH OF THE CORNER OF THE CONALLA STREET NORTHERN BACK OF CURB
 X = 710990.68
 Y = 710990.68
 Z = 468.71

T.M. #27
 A POINT LOCATED NEAR THE INTERSECTION OF LIQUOR STREET APPROXIMATELY 200 FEET NORTH OF THE CORNER OF LIQUOR STREET APPROXIMATELY 65 FEET NORTH OF THE CORNER OF THE CONALLA STREET NORTHERN BACK OF CURB
 X = 710990.68
 Y = 710990.68
 Z = 468.71

T.M. #28
 A POINT LOCATED NEAR THE INTERSECTION OF LIQUOR STREET APPROXIMATELY 200 FEET NORTH OF THE CORNER OF LIQUOR STREET APPROXIMATELY 65 FEET NORTH OF THE CORNER OF THE CONALLA STREET NORTHERN BACK OF CURB
 X = 710990.68
 Y = 710990.68
 Z = 468.71

T.M. #29
 A POINT LOCATED NEAR THE INTERSECTION OF LIQUOR STREET APPROXIMATELY 200 FEET NORTH OF THE CORNER OF LIQUOR STREET APPROXIMATELY 65 FEET NORTH OF THE CORNER OF THE CONALLA STREET NORTHERN BACK OF CURB
 X = 710990.68
 Y = 710990.68
 Z = 468.71

T.M. #30
 A POINT LOCATED NEAR THE INTERSECTION OF LIQUOR STREET APPROXIMATELY 200 FEET NORTH OF THE CORNER OF LIQUOR STREET APPROXIMATELY 65 FEET NORTH OF THE CORNER OF THE CONALLA STREET NORTHERN BACK OF CURB
 X = 710990.68
 Y = 710990.68
 Z = 468.71

- LEGEND**
- 1. 2" DIA. PIPE CONCRETE
 - 2. 4" DIA. PIPE CONCRETE
 - 3. 6" DIA. PIPE CONCRETE
 - 4. 8" DIA. PIPE CONCRETE
 - 5. 10" DIA. PIPE CONCRETE
 - 6. 12" DIA. PIPE CONCRETE
 - 7. 14" DIA. PIPE CONCRETE
 - 8. 16" DIA. PIPE CONCRETE
 - 9. 18" DIA. PIPE CONCRETE
 - 10. 20" DIA. PIPE CONCRETE
 - 11. 22" DIA. PIPE CONCRETE
 - 12. 24" DIA. PIPE CONCRETE
 - 13. 26" DIA. PIPE CONCRETE
 - 14. 28" DIA. PIPE CONCRETE
 - 15. 30" DIA. PIPE CONCRETE
 - 16. 32" DIA. PIPE CONCRETE
 - 17. 34" DIA. PIPE CONCRETE
 - 18. 36" DIA. PIPE CONCRETE
 - 19. 38" DIA. PIPE CONCRETE
 - 20. 40" DIA. PIPE CONCRETE
 - 21. 42" DIA. PIPE CONCRETE
 - 22. 44" DIA. PIPE CONCRETE
 - 23. 46" DIA. PIPE CONCRETE
 - 24. 48" DIA. PIPE CONCRETE
 - 25. 50" DIA. PIPE CONCRETE
 - 26. 52" DIA. PIPE CONCRETE
 - 27. 54" DIA. PIPE CONCRETE
 - 28. 56" DIA. PIPE CONCRETE
 - 29. 58" DIA. PIPE CONCRETE
 - 30. 60" DIA. PIPE CONCRETE
 - 31. 62" DIA. PIPE CONCRETE
 - 32. 64" DIA. PIPE CONCRETE
 - 33. 66" DIA. PIPE CONCRETE
 - 34. 68" DIA. PIPE CONCRETE
 - 35. 70" DIA. PIPE CONCRETE
 - 36. 72" DIA. PIPE CONCRETE
 - 37. 74" DIA. PIPE CONCRETE
 - 38. 76" DIA. PIPE CONCRETE
 - 39. 78" DIA. PIPE CONCRETE
 - 40. 80" DIA. PIPE CONCRETE
 - 41. 82" DIA. PIPE CONCRETE
 - 42. 84" DIA. PIPE CONCRETE
 - 43. 86" DIA. PIPE CONCRETE
 - 44. 88" DIA. PIPE CONCRETE
 - 45. 90" DIA. PIPE CONCRETE
 - 46. 92" DIA. PIPE CONCRETE
 - 47. 94" DIA. PIPE CONCRETE
 - 48. 96" DIA. PIPE CONCRETE
 - 49. 98" DIA. PIPE CONCRETE
 - 50. 100" DIA. PIPE CONCRETE
 - 51. 102" DIA. PIPE CONCRETE
 - 52. 104" DIA. PIPE CONCRETE
 - 53. 106" DIA. PIPE CONCRETE
 - 54. 108" DIA. PIPE CONCRETE
 - 55. 110" DIA. PIPE CONCRETE
 - 56. 112" DIA. PIPE CONCRETE
 - 57. 114" DIA. PIPE CONCRETE
 - 58. 116" DIA. PIPE CONCRETE
 - 59. 118" DIA. PIPE CONCRETE
 - 60. 120" DIA. PIPE CONCRETE
 - 61. 122" DIA. PIPE CONCRETE
 - 62. 124" DIA. PIPE CONCRETE
 - 63. 126" DIA. PIPE CONCRETE
 - 64. 128" DIA. PIPE CONCRETE
 - 65. 130" DIA. PIPE CONCRETE
 - 66. 132" DIA. PIPE CONCRETE
 - 67. 134" DIA. PIPE CONCRETE
 - 68. 136" DIA. PIPE CONCRETE
 - 69. 138" DIA. PIPE CONCRETE
 - 70. 140" DIA. PIPE CONCRETE
 - 71. 142" DIA. PIPE CONCRETE
 - 72. 144" DIA. PIPE CONCRETE
 - 73. 146" DIA. PIPE CONCRETE
 - 74. 148" DIA. PIPE CONCRETE
 - 75. 150" DIA. PIPE CONCRETE
 - 76. 152" DIA. PIPE CONCRETE
 - 77. 154" DIA. PIPE CONCRETE
 - 78. 156" DIA. PIPE CONCRETE
 - 79. 158" DIA. PIPE CONCRETE
 - 80. 160" DIA. PIPE CONCRETE
 - 81. 162" DIA. PIPE CONCRETE
 - 82. 164" DIA. PIPE CONCRETE
 - 83. 166" DIA. PIPE CONCRETE
 - 84. 168" DIA. PIPE CONCRETE
 - 85. 170" DIA. PIPE CONCRETE
 - 86. 172" DIA. PIPE CONCRETE
 - 87. 174" DIA. PIPE CONCRETE
 - 88. 176" DIA. PIPE CONCRETE
 - 89. 178" DIA. PIPE CONCRETE
 - 90. 180" DIA. PIPE CONCRETE
 - 91. 182" DIA. PIPE CONCRETE
 - 92. 184" DIA. PIPE CONCRETE
 - 93. 186" DIA. PIPE CONCRETE
 - 94. 188" DIA. PIPE CONCRETE
 - 95. 190" DIA. PIPE CONCRETE
 - 96. 192" DIA. PIPE CONCRETE
 - 97. 194" DIA. PIPE CONCRETE
 - 98. 196" DIA. PIPE CONCRETE
 - 99. 198" DIA. PIPE CONCRETE
 - 100. 200" DIA. PIPE CONCRETE

CAUTION!!!
 EXISTING UTILITIES
 EXISTING UTILITIES, OVERHEAD AND UNDERGROUND, INDICATED ON THESE PLANS HAVE BEEN LOCATED FROM REFERENCE INFORMATION. IT SHALL BE THE RESPONSIBILITY OF THE CONTRACTOR TO VERIFY THE LOCATION AND DEPTH OF ALL UTILITIES PRIOR TO CONSTRUCTION. TO THE NECESSARY PRECAUTIONS IN ORDER TO PROTECT ALL UTILITIES ENCOUNTERED, THE CONTRACTOR SHALL PRESERVE AND PROTECT ALL EXISTING UTILITIES FROM DAMAGE DURING CONSTRUCTION.

GRAPHIC SCALE

1" = 30'

0' 15' 30'

NORTH

DRAWN: WHS
 CHECKED: MHS
 DATE: JUNE 2017
 SCALE: AS SHOWN
 JOB NO.: 16-017

TRAIL PLAN/PROFILE
SECTION 15
CROSTOWN TRAIL
 CITY OF SULPHUR SPRINGS, TEXAS



212 West Ninth Street
 Tyler, Texas 75701
 903-597-0517 Fax
 TBPE No. F-14571

REFERENCE BENCHMARK:
 THE BENCHMARK SURVEY, TOPOGRAFC SURVEY, BENCHMARKS AND LOCATION OF ALL BENCHMARKS ARE SHOWN ON THIS PLAN AND THE BENCHMARKS WERE PROVIDED BY LANDMARK LAND SURVEYING, INC.

T.M. #1
 A 17' ALUMINUM DEK STAMPED CITY OF SULPHUR SPRINGS CONTROL POINT LOCATED NEAR THE INTERSECTION OF MILBERRY STREET APPROXIMATELY 62 FEET NORTH OF THE CENTERLINE OF THE CONNALLY STREET NORTH SIDE OF CURB
 X = 284844.84
 Y = 2109869.58
 Z = 486.11

T.M. #2
 A 17' ALUMINUM DEK STAMPED CITY OF SULPHUR SPRINGS CONTROL POINT LOCATED NEAR THE INTERSECTION OF MILBERRY STREET APPROXIMATELY 62 FEET NORTH OF THE CENTERLINE OF THE CONNALLY STREET NORTH SIDE OF CURB
 X = 284844.84
 Y = 2109869.58
 Z = 486.11

T.M. #3
 A 17' ALUMINUM DEK STAMPED CITY OF SULPHUR SPRINGS CONTROL POINT LOCATED NEAR THE INTERSECTION OF MILBERRY STREET APPROXIMATELY 62 FEET NORTH OF THE CENTERLINE OF THE CONNALLY STREET NORTH SIDE OF CURB
 X = 284844.84
 Y = 2109869.58
 Z = 486.11

T.M. #4
 A 17' ALUMINUM DEK STAMPED CITY OF SULPHUR SPRINGS CONTROL POINT LOCATED NEAR THE INTERSECTION OF MILBERRY STREET APPROXIMATELY 62 FEET NORTH OF THE CENTERLINE OF THE CONNALLY STREET NORTH SIDE OF CURB
 X = 284844.84
 Y = 2109869.58
 Z = 486.11

T.M. #5
 A 17' ALUMINUM DEK STAMPED CITY OF SULPHUR SPRINGS CONTROL POINT LOCATED NEAR THE INTERSECTION OF MILBERRY STREET APPROXIMATELY 62 FEET NORTH OF THE CENTERLINE OF THE CONNALLY STREET NORTH SIDE OF CURB
 X = 284844.84
 Y = 2109869.58
 Z = 486.11

T.M. #6
 A 17' ALUMINUM DEK STAMPED CITY OF SULPHUR SPRINGS CONTROL POINT LOCATED NEAR THE INTERSECTION OF MILBERRY STREET APPROXIMATELY 62 FEET NORTH OF THE CENTERLINE OF THE CONNALLY STREET NORTH SIDE OF CURB
 X = 284844.84
 Y = 2109869.58
 Z = 486.11

T.M. #7
 A 17' ALUMINUM DEK STAMPED CITY OF SULPHUR SPRINGS CONTROL POINT LOCATED NEAR THE INTERSECTION OF MILBERRY STREET APPROXIMATELY 62 FEET NORTH OF THE CENTERLINE OF THE CONNALLY STREET NORTH SIDE OF CURB
 X = 284844.84
 Y = 2109869.58
 Z = 486.11

T.M. #8
 A 17' ALUMINUM DEK STAMPED CITY OF SULPHUR SPRINGS CONTROL POINT LOCATED NEAR THE INTERSECTION OF MILBERRY STREET APPROXIMATELY 62 FEET NORTH OF THE CENTERLINE OF THE CONNALLY STREET NORTH SIDE OF CURB
 X = 284844.84
 Y = 2109869.58
 Z = 486.11

T.M. #9
 A 17' ALUMINUM DEK STAMPED CITY OF SULPHUR SPRINGS CONTROL POINT LOCATED NEAR THE INTERSECTION OF MILBERRY STREET APPROXIMATELY 62 FEET NORTH OF THE CENTERLINE OF THE CONNALLY STREET NORTH SIDE OF CURB
 X = 284844.84
 Y = 2109869.58
 Z = 486.11

T.M. #10
 A 17' ALUMINUM DEK STAMPED CITY OF SULPHUR SPRINGS CONTROL POINT LOCATED NEAR THE INTERSECTION OF MILBERRY STREET APPROXIMATELY 62 FEET NORTH OF THE CENTERLINE OF THE CONNALLY STREET NORTH SIDE OF CURB
 X = 284844.84
 Y = 2109869.58
 Z = 486.11

T.M. #11
 A 17' ALUMINUM DEK STAMPED CITY OF SULPHUR SPRINGS CONTROL POINT LOCATED NEAR THE INTERSECTION OF MILBERRY STREET APPROXIMATELY 62 FEET NORTH OF THE CENTERLINE OF THE CONNALLY STREET NORTH SIDE OF CURB
 X = 284844.84
 Y = 2109869.58
 Z = 486.11

T.M. #12
 A 17' ALUMINUM DEK STAMPED CITY OF SULPHUR SPRINGS CONTROL POINT LOCATED NEAR THE INTERSECTION OF MILBERRY STREET APPROXIMATELY 62 FEET NORTH OF THE CENTERLINE OF THE CONNALLY STREET NORTH SIDE OF CURB
 X = 284844.84
 Y = 2109869.58
 Z = 486.11

T.M. #13
 A 17' ALUMINUM DEK STAMPED CITY OF SULPHUR SPRINGS CONTROL POINT LOCATED NEAR THE INTERSECTION OF MILBERRY STREET APPROXIMATELY 62 FEET NORTH OF THE CENTERLINE OF THE CONNALLY STREET NORTH SIDE OF CURB
 X = 284844.84
 Y = 2109869.58
 Z = 486.11

T.M. #14
 A 17' ALUMINUM DEK STAMPED CITY OF SULPHUR SPRINGS CONTROL POINT LOCATED NEAR THE INTERSECTION OF MILBERRY STREET APPROXIMATELY 62 FEET NORTH OF THE CENTERLINE OF THE CONNALLY STREET NORTH SIDE OF CURB
 X = 284844.84
 Y = 2109869.58
 Z = 486.11

T.M. #15
 A 17' ALUMINUM DEK STAMPED CITY OF SULPHUR SPRINGS CONTROL POINT LOCATED NEAR THE INTERSECTION OF MILBERRY STREET APPROXIMATELY 62 FEET NORTH OF THE CENTERLINE OF THE CONNALLY STREET NORTH SIDE OF CURB
 X = 284844.84
 Y = 2109869.58
 Z = 486.11

T.M. #16
 A 17' ALUMINUM DEK STAMPED CITY OF SULPHUR SPRINGS CONTROL POINT LOCATED NEAR THE INTERSECTION OF MILBERRY STREET APPROXIMATELY 62 FEET NORTH OF THE CENTERLINE OF THE CONNALLY STREET NORTH SIDE OF CURB
 X = 284844.84
 Y = 2109869.58
 Z = 486.11

T.M. #17
 A 17' ALUMINUM DEK STAMPED CITY OF SULPHUR SPRINGS CONTROL POINT LOCATED NEAR THE INTERSECTION OF MILBERRY STREET APPROXIMATELY 62 FEET NORTH OF THE CENTERLINE OF THE CONNALLY STREET NORTH SIDE OF CURB
 X = 284844.84
 Y = 2109869.58
 Z = 486.11

T.M. #18
 A 17' ALUMINUM DEK STAMPED CITY OF SULPHUR SPRINGS CONTROL POINT LOCATED NEAR THE INTERSECTION OF MILBERRY STREET APPROXIMATELY 62 FEET NORTH OF THE CENTERLINE OF THE CONNALLY STREET NORTH SIDE OF CURB
 X = 284844.84
 Y = 2109869.58
 Z = 486.11

T.M. #19
 A 17' ALUMINUM DEK STAMPED CITY OF SULPHUR SPRINGS CONTROL POINT LOCATED NEAR THE INTERSECTION OF MILBERRY STREET APPROXIMATELY 62 FEET NORTH OF THE CENTERLINE OF THE CONNALLY STREET NORTH SIDE OF CURB
 X = 284844.84
 Y = 2109869.58
 Z = 486.11

T.M. #20
 A 17' ALUMINUM DEK STAMPED CITY OF SULPHUR SPRINGS CONTROL POINT LOCATED NEAR THE INTERSECTION OF MILBERRY STREET APPROXIMATELY 62 FEET NORTH OF THE CENTERLINE OF THE CONNALLY STREET NORTH SIDE OF CURB
 X = 284844.84
 Y = 2109869.58
 Z = 486.11

T.M. #21
 A 17' ALUMINUM DEK STAMPED CITY OF SULPHUR SPRINGS CONTROL POINT LOCATED NEAR THE INTERSECTION OF MILBERRY STREET APPROXIMATELY 62 FEET NORTH OF THE CENTERLINE OF THE CONNALLY STREET NORTH SIDE OF CURB
 X = 284844.84
 Y = 2109869.58
 Z = 486.11

T.M. #22
 A 17' ALUMINUM DEK STAMPED CITY OF SULPHUR SPRINGS CONTROL POINT LOCATED NEAR THE INTERSECTION OF MILBERRY STREET APPROXIMATELY 62 FEET NORTH OF THE CENTERLINE OF THE CONNALLY STREET NORTH SIDE OF CURB
 X = 284844.84
 Y = 2109869.58
 Z = 486.11

T.M. #23
 A 17' ALUMINUM DEK STAMPED CITY OF SULPHUR SPRINGS CONTROL POINT LOCATED NEAR THE INTERSECTION OF MILBERRY STREET APPROXIMATELY 62 FEET NORTH OF THE CENTERLINE OF THE CONNALLY STREET NORTH SIDE OF CURB
 X = 284844.84
 Y = 2109869.58
 Z = 486.11

T.M. #24
 A 17' ALUMINUM DEK STAMPED CITY OF SULPHUR SPRINGS CONTROL POINT LOCATED NEAR THE INTERSECTION OF MILBERRY STREET APPROXIMATELY 62 FEET NORTH OF THE CENTERLINE OF THE CONNALLY STREET NORTH SIDE OF CURB
 X = 284844.84
 Y = 2109869.58
 Z = 486.11

T.M. #25
 A 17' ALUMINUM DEK STAMPED CITY OF SULPHUR SPRINGS CONTROL POINT LOCATED NEAR THE INTERSECTION OF MILBERRY STREET APPROXIMATELY 62 FEET NORTH OF THE CENTERLINE OF THE CONNALLY STREET NORTH SIDE OF CURB
 X = 284844.84
 Y = 2109869.58
 Z = 486.11

T.M. #26
 A 17' ALUMINUM DEK STAMPED CITY OF SULPHUR SPRINGS CONTROL POINT LOCATED NEAR THE INTERSECTION OF MILBERRY STREET APPROXIMATELY 62 FEET NORTH OF THE CENTERLINE OF THE CONNALLY STREET NORTH SIDE OF CURB
 X = 284844.84
 Y = 2109869.58
 Z = 486.11

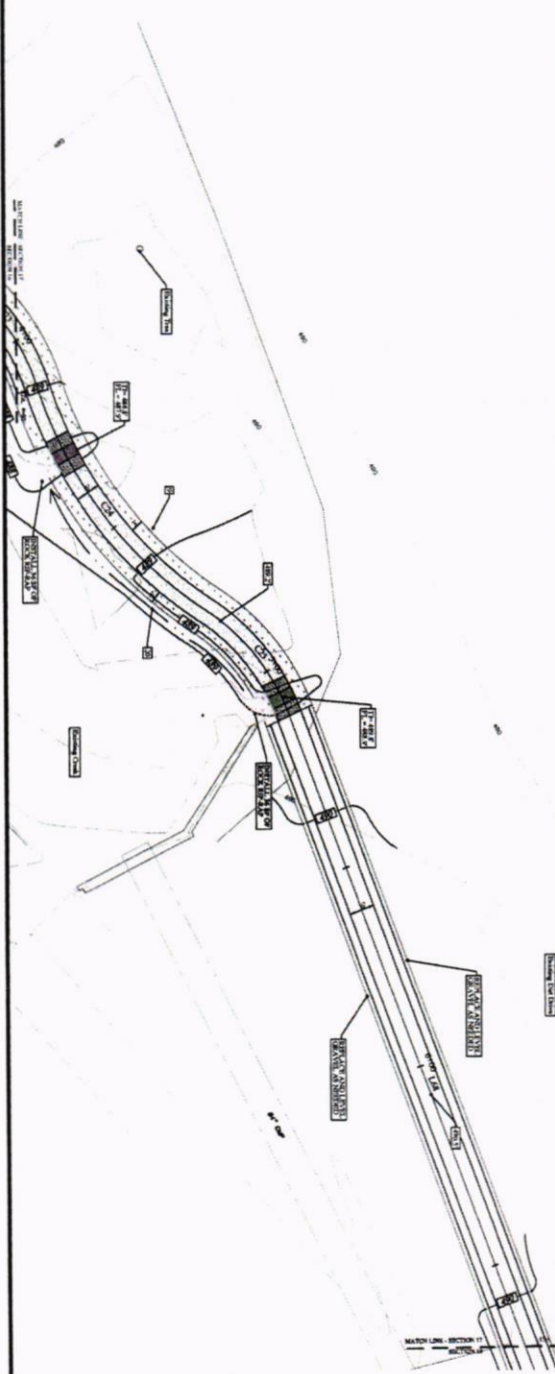
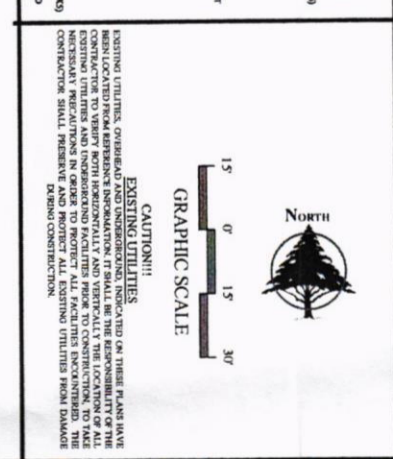
T.M. #27
 A 17' ALUMINUM DEK STAMPED CITY OF SULPHUR SPRINGS CONTROL POINT LOCATED NEAR THE INTERSECTION OF MILBERRY STREET APPROXIMATELY 62 FEET NORTH OF THE CENTERLINE OF THE CONNALLY STREET NORTH SIDE OF CURB
 X = 284844.84
 Y = 2109869.58
 Z = 486.11

T.M. #28
 A 17' ALUMINUM DEK STAMPED CITY OF SULPHUR SPRINGS CONTROL POINT LOCATED NEAR THE INTERSECTION OF MILBERRY STREET APPROXIMATELY 62 FEET NORTH OF THE CENTERLINE OF THE CONNALLY STREET NORTH SIDE OF CURB
 X = 284844.84
 Y = 2109869.58
 Z = 486.11

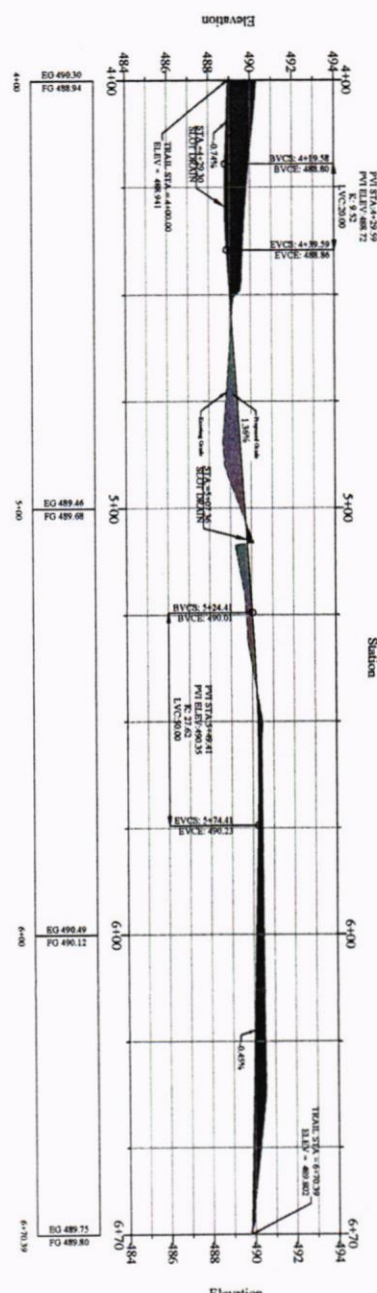
T.M. #29
 A 17' ALUMINUM DEK STAMPED CITY OF SULPHUR SPRINGS CONTROL POINT LOCATED NEAR THE INTERSECTION OF MILBERRY STREET APPROXIMATELY 62 FEET NORTH OF THE CENTERLINE OF THE CONNALLY STREET NORTH SIDE OF CURB
 X = 284844.84
 Y = 2109869.58
 Z = 486.11

T.M. #30
 A 17' ALUMINUM DEK STAMPED CITY OF SULPHUR SPRINGS CONTROL POINT LOCATED NEAR THE INTERSECTION OF MILBERRY STREET APPROXIMATELY 62 FEET NORTH OF THE CENTERLINE OF THE CONNALLY STREET NORTH SIDE OF CURB
 X = 284844.84
 Y = 2109869.58
 Z = 486.11

- LEGEND**
- 1 2" CONCRETED
 - 2 4" CONCRETED
 - 3 6" CONCRETED
 - 4 8" CONCRETED
 - 5 10" CONCRETED
 - 6 12" CONCRETED
 - 7 14" CONCRETED
 - 8 16" CONCRETED
 - 9 18" CONCRETED
 - 10 20" CONCRETED
 - 11 22" CONCRETED
 - 12 24" CONCRETED
 - 13 26" CONCRETED
 - 14 28" CONCRETED
 - 15 30" CONCRETED
 - 16 32" CONCRETED
 - 17 34" CONCRETED
 - 18 36" CONCRETED
 - 19 38" CONCRETED
 - 20 40" CONCRETED
 - 21 42" CONCRETED
 - 22 44" CONCRETED
 - 23 46" CONCRETED
 - 24 48" CONCRETED
 - 25 50" CONCRETED
 - 26 52" CONCRETED
 - 27 54" CONCRETED
 - 28 56" CONCRETED
 - 29 58" CONCRETED
 - 30 60" CONCRETED
 - 31 62" CONCRETED
 - 32 64" CONCRETED
 - 33 66" CONCRETED
 - 34 68" CONCRETED
 - 35 70" CONCRETED
 - 36 72" CONCRETED
 - 37 74" CONCRETED
 - 38 76" CONCRETED
 - 39 78" CONCRETED
 - 40 80" CONCRETED
 - 41 82" CONCRETED
 - 42 84" CONCRETED
 - 43 86" CONCRETED
 - 44 88" CONCRETED
 - 45 90" CONCRETED
 - 46 92" CONCRETED
 - 47 94" CONCRETED
 - 48 96" CONCRETED
 - 49 98" CONCRETED
 - 50 100" CONCRETED
 - 51 102" CONCRETED
 - 52 104" CONCRETED
 - 53 106" CONCRETED
 - 54 108" CONCRETED
 - 55 110" CONCRETED
 - 56 112" CONCRETED
 - 57 114" CONCRETED
 - 58 116" CONCRETED
 - 59 118" CONCRETED
 - 60 120" CONCRETED
 - 61 122" CONCRETED
 - 62 124" CONCRETED
 - 63 126" CONCRETED
 - 64 128" CONCRETED
 - 65 130" CONCRETED
 - 66 132" CONCRETED
 - 67 134" CONCRETED
 - 68 136" CONCRETED
 - 69 138" CONCRETED
 - 70 140" CONCRETED
 - 71 142" CONCRETED
 - 72 144" CONCRETED
 - 73 146" CONCRETED
 - 74 148" CONCRETED
 - 75 150" CONCRETED
 - 76 152" CONCRETED
 - 77 154" CONCRETED
 - 78 156" CONCRETED
 - 79 158" CONCRETED
 - 80 160" CONCRETED
 - 81 162" CONCRETED
 - 82 164" CONCRETED
 - 83 166" CONCRETED
 - 84 168" CONCRETED
 - 85 170" CONCRETED
 - 86 172" CONCRETED
 - 87 174" CONCRETED
 - 88 176" CONCRETED
 - 89 178" CONCRETED
 - 90 180" CONCRETED
 - 91 182" CONCRETED
 - 92 184" CONCRETED
 - 93 186" CONCRETED
 - 94 188" CONCRETED
 - 95 190" CONCRETED
 - 96 192" CONCRETED
 - 97 194" CONCRETED
 - 98 196" CONCRETED
 - 99 198" CONCRETED
 - 100 200" CONCRETED



Alignment - 2 PROFILE



Alignment - 2			
Number	Station	Length	Label/Description
C23	50.00	30.00	227' 11" 0.644%
C24	100.00	64.10	337' 11" 21.397%
C25	50.00	31.08	308' 19" 48.217%
L48	187.00	529' 29" 31.387%	

<p>TRAIL PLAN/PROFILE SECTION 17 CROSTOWN TRAIL CITY OF SULPHUR SPRINGS, TEXAS</p>	<p>MHS PLANNING & DESIGN, LLC</p>		<p>212 West Ninth Street Tyler, Texas 75701 903-597-6606 903-597-0517 Fax TBPE No. F-14571</p>
<p>DRAWN: WHS CHECKED: MHS DATE: JUNE 2017 SCALE: AS SHOWN JOB NO.: 16-017</p>	<p>35 OF 56</p>		

REFERENCE BENCHMARK:
 THE BOUNDARY SURVEY, TOWN OF ARK, BENCHMARK AND LOCATION OF ALL
 LANDMAKER LAND SURVEYING, INC.

T.M. #1
 ALUMINUM DISK STAMPED CITY OF SULPHUR SPRINGS CONTROL POINT LOCATED
 NEAR THE INTERSECTION OF MILLBERRY STREET APPROXIMATELY 82 FEET NORTH OF THE
 CENTERLINE OF THE CONNALLY STREET NORTH SIDE OF CURB
 X = 28484.88
 Y = 710986.58
 Z = 486.11

T.M. #2
 ALUMINUM DISK STAMPED CITY OF SULPHUR SPRINGS CONTROL POINT LOCATED
 NEAR THE INTERSECTION OF MILLBERRY STREET APPROXIMATELY 96 FEET
 SOUTH OF THE CONNALLY STREET NORTH SIDE OF CURB
 X = 28484.88
 Y = 710986.58
 Z = 486.11

T.M. #3
 ALUMINUM DISK STAMPED CITY OF SULPHUR SPRINGS CONTROL POINT LOCATED
 NEAR THE INTERSECTION OF MILLBERRY STREET APPROXIMATELY 110 FEET SOUTH OF THE
 CENTERLINE OF THE CONNALLY STREET NORTH SIDE OF CURB
 X = 28484.88
 Y = 710986.58
 Z = 486.11

T.M. #4
 ALUMINUM DISK STAMPED CITY OF SULPHUR SPRINGS CONTROL POINT LOCATED
 NEAR THE INTERSECTION OF MILLBERRY STREET APPROXIMATELY 124 FEET SOUTH OF THE
 CENTERLINE OF THE CONNALLY STREET NORTH SIDE OF CURB
 X = 28484.88
 Y = 710986.58
 Z = 486.11

T.M. #5
 ALUMINUM DISK STAMPED CITY OF SULPHUR SPRINGS CONTROL POINT LOCATED
 NEAR THE INTERSECTION OF MILLBERRY STREET APPROXIMATELY 138 FEET SOUTH OF THE
 CENTERLINE OF THE CONNALLY STREET NORTH SIDE OF CURB
 X = 28484.88
 Y = 710986.58
 Z = 486.11

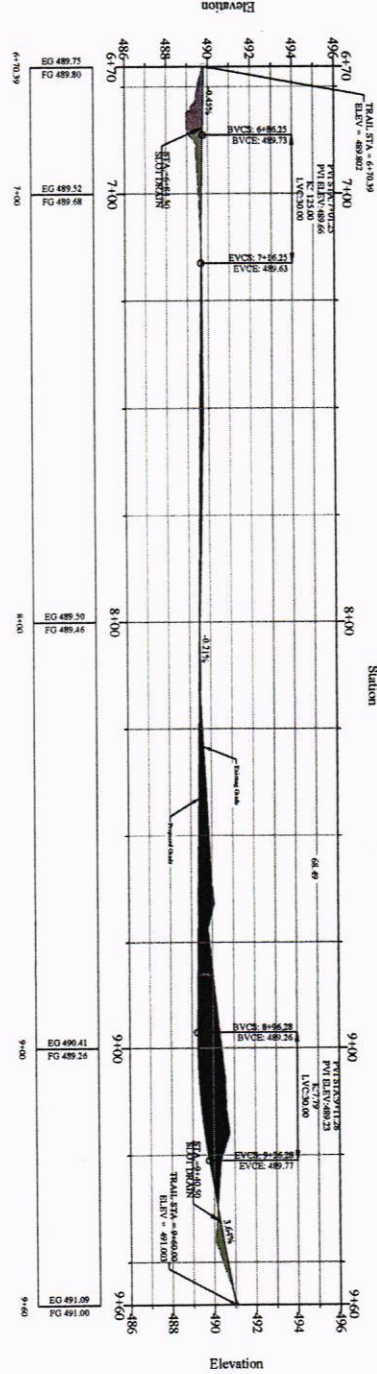
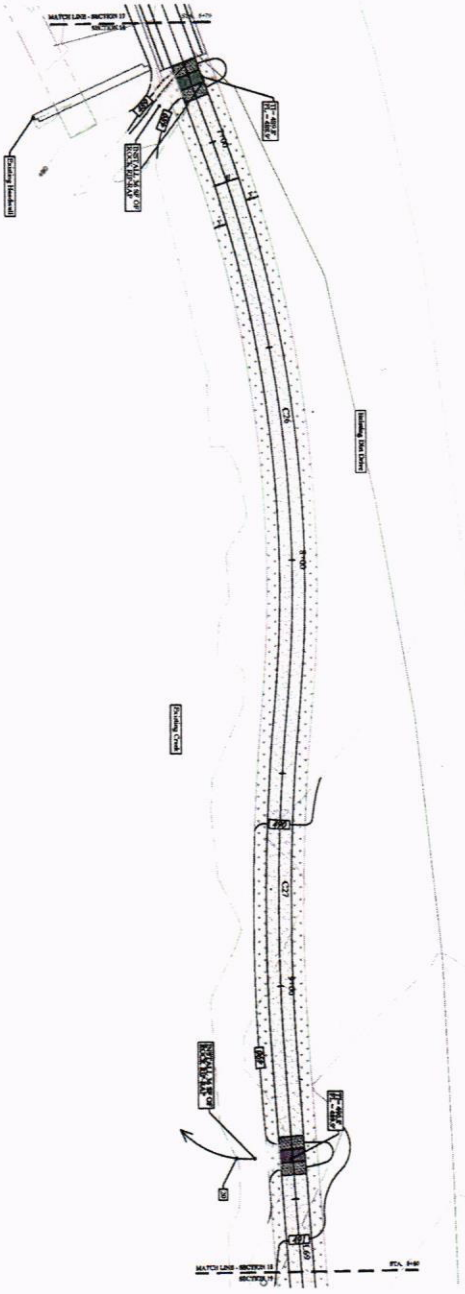
T.M. #6
 ALUMINUM DISK STAMPED CITY OF SULPHUR SPRINGS CONTROL POINT LOCATED
 NEAR THE INTERSECTION OF MILLBERRY STREET APPROXIMATELY 152 FEET SOUTH OF THE
 CENTERLINE OF THE CONNALLY STREET NORTH SIDE OF CURB
 X = 28484.88
 Y = 710986.58
 Z = 486.11

T.M. #7
 ALUMINUM DISK STAMPED CITY OF SULPHUR SPRINGS CONTROL POINT LOCATED
 NEAR THE INTERSECTION OF MILLBERRY STREET APPROXIMATELY 166 FEET SOUTH OF THE
 CENTERLINE OF THE CONNALLY STREET NORTH SIDE OF CURB
 X = 28484.88
 Y = 710986.58
 Z = 486.11

T.M. #8
 ALUMINUM DISK STAMPED CITY OF SULPHUR SPRINGS CONTROL POINT LOCATED
 NEAR THE INTERSECTION OF MILLBERRY STREET APPROXIMATELY 180 FEET SOUTH OF THE
 CENTERLINE OF THE CONNALLY STREET NORTH SIDE OF CURB
 X = 28484.88
 Y = 710986.58
 Z = 486.11

T.M. #9
 ALUMINUM DISK STAMPED CITY OF SULPHUR SPRINGS CONTROL POINT LOCATED
 NEAR THE INTERSECTION OF MILLBERRY STREET APPROXIMATELY 194 FEET SOUTH OF THE
 CENTERLINE OF THE CONNALLY STREET NORTH SIDE OF CURB
 X = 28484.88
 Y = 710986.58
 Z = 486.11

T.M. #10
 ALUMINUM DISK STAMPED CITY OF SULPHUR SPRINGS CONTROL POINT LOCATED
 NEAR THE INTERSECTION OF MILLBERRY STREET APPROXIMATELY 208 FEET SOUTH OF THE
 CENTERLINE OF THE CONNALLY STREET NORTH SIDE OF CURB
 X = 28484.88
 Y = 710986.58
 Z = 486.11



Alignment - 2 PROFILE

- LEGEND**
- 1 2.00 FT CONCRETE CURB AND GUTTER
 - 2 4.00 FT CONCRETE CURB AND GUTTER
 - 3 6.00 FT CONCRETE CURB AND GUTTER
 - 4 8.00 FT CONCRETE CURB AND GUTTER
 - 5 10.00 FT CONCRETE CURB AND GUTTER
 - 6 12.00 FT CONCRETE CURB AND GUTTER
 - 7 14.00 FT CONCRETE CURB AND GUTTER
 - 8 16.00 FT CONCRETE CURB AND GUTTER
 - 9 18.00 FT CONCRETE CURB AND GUTTER
 - 10 20.00 FT CONCRETE CURB AND GUTTER
 - 11 22.00 FT CONCRETE CURB AND GUTTER
 - 12 24.00 FT CONCRETE CURB AND GUTTER
 - 13 26.00 FT CONCRETE CURB AND GUTTER
 - 14 28.00 FT CONCRETE CURB AND GUTTER
 - 15 30.00 FT CONCRETE CURB AND GUTTER
 - 16 32.00 FT CONCRETE CURB AND GUTTER
 - 17 34.00 FT CONCRETE CURB AND GUTTER
 - 18 36.00 FT CONCRETE CURB AND GUTTER
 - 19 38.00 FT CONCRETE CURB AND GUTTER
 - 20 40.00 FT CONCRETE CURB AND GUTTER
 - 21 42.00 FT CONCRETE CURB AND GUTTER
 - 22 44.00 FT CONCRETE CURB AND GUTTER
 - 23 46.00 FT CONCRETE CURB AND GUTTER
 - 24 48.00 FT CONCRETE CURB AND GUTTER
 - 25 50.00 FT CONCRETE CURB AND GUTTER
 - 26 52.00 FT CONCRETE CURB AND GUTTER
 - 27 54.00 FT CONCRETE CURB AND GUTTER
 - 28 56.00 FT CONCRETE CURB AND GUTTER
 - 29 58.00 FT CONCRETE CURB AND GUTTER
 - 30 60.00 FT CONCRETE CURB AND GUTTER
 - 31 62.00 FT CONCRETE CURB AND GUTTER
 - 32 64.00 FT CONCRETE CURB AND GUTTER
 - 33 66.00 FT CONCRETE CURB AND GUTTER
 - 34 68.00 FT CONCRETE CURB AND GUTTER
 - 35 70.00 FT CONCRETE CURB AND GUTTER
 - 36 72.00 FT CONCRETE CURB AND GUTTER
 - 37 74.00 FT CONCRETE CURB AND GUTTER
 - 38 76.00 FT CONCRETE CURB AND GUTTER
 - 39 78.00 FT CONCRETE CURB AND GUTTER
 - 40 80.00 FT CONCRETE CURB AND GUTTER
 - 41 82.00 FT CONCRETE CURB AND GUTTER
 - 42 84.00 FT CONCRETE CURB AND GUTTER
 - 43 86.00 FT CONCRETE CURB AND GUTTER
 - 44 88.00 FT CONCRETE CURB AND GUTTER
 - 45 90.00 FT CONCRETE CURB AND GUTTER
 - 46 92.00 FT CONCRETE CURB AND GUTTER
 - 47 94.00 FT CONCRETE CURB AND GUTTER
 - 48 96.00 FT CONCRETE CURB AND GUTTER
 - 49 98.00 FT CONCRETE CURB AND GUTTER
 - 50 100.00 FT CONCRETE CURB AND GUTTER
 - 51 102.00 FT CONCRETE CURB AND GUTTER
 - 52 104.00 FT CONCRETE CURB AND GUTTER
 - 53 106.00 FT CONCRETE CURB AND GUTTER
 - 54 108.00 FT CONCRETE CURB AND GUTTER
 - 55 110.00 FT CONCRETE CURB AND GUTTER
 - 56 112.00 FT CONCRETE CURB AND GUTTER
 - 57 114.00 FT CONCRETE CURB AND GUTTER
 - 58 116.00 FT CONCRETE CURB AND GUTTER
 - 59 118.00 FT CONCRETE CURB AND GUTTER
 - 60 120.00 FT CONCRETE CURB AND GUTTER
 - 61 122.00 FT CONCRETE CURB AND GUTTER
 - 62 124.00 FT CONCRETE CURB AND GUTTER
 - 63 126.00 FT CONCRETE CURB AND GUTTER
 - 64 128.00 FT CONCRETE CURB AND GUTTER
 - 65 130.00 FT CONCRETE CURB AND GUTTER
 - 66 132.00 FT CONCRETE CURB AND GUTTER
 - 67 134.00 FT CONCRETE CURB AND GUTTER
 - 68 136.00 FT CONCRETE CURB AND GUTTER
 - 69 138.00 FT CONCRETE CURB AND GUTTER
 - 70 140.00 FT CONCRETE CURB AND GUTTER
 - 71 142.00 FT CONCRETE CURB AND GUTTER
 - 72 144.00 FT CONCRETE CURB AND GUTTER
 - 73 146.00 FT CONCRETE CURB AND GUTTER
 - 74 148.00 FT CONCRETE CURB AND GUTTER
 - 75 150.00 FT CONCRETE CURB AND GUTTER
 - 76 152.00 FT CONCRETE CURB AND GUTTER
 - 77 154.00 FT CONCRETE CURB AND GUTTER
 - 78 156.00 FT CONCRETE CURB AND GUTTER
 - 79 158.00 FT CONCRETE CURB AND GUTTER
 - 80 160.00 FT CONCRETE CURB AND GUTTER
 - 81 162.00 FT CONCRETE CURB AND GUTTER
 - 82 164.00 FT CONCRETE CURB AND GUTTER
 - 83 166.00 FT CONCRETE CURB AND GUTTER
 - 84 168.00 FT CONCRETE CURB AND GUTTER
 - 85 170.00 FT CONCRETE CURB AND GUTTER
 - 86 172.00 FT CONCRETE CURB AND GUTTER
 - 87 174.00 FT CONCRETE CURB AND GUTTER
 - 88 176.00 FT CONCRETE CURB AND GUTTER
 - 89 178.00 FT CONCRETE CURB AND GUTTER
 - 90 180.00 FT CONCRETE CURB AND GUTTER
 - 91 182.00 FT CONCRETE CURB AND GUTTER
 - 92 184.00 FT CONCRETE CURB AND GUTTER
 - 93 186.00 FT CONCRETE CURB AND GUTTER
 - 94 188.00 FT CONCRETE CURB AND GUTTER
 - 95 190.00 FT CONCRETE CURB AND GUTTER
 - 96 192.00 FT CONCRETE CURB AND GUTTER
 - 97 194.00 FT CONCRETE CURB AND GUTTER
 - 98 196.00 FT CONCRETE CURB AND GUTTER
 - 99 198.00 FT CONCRETE CURB AND GUTTER
 - 100 200.00 FT CONCRETE CURB AND GUTTER

CAUTION!
 EXISTING UTILITIES
 EXISTING UTILITIES, OVERHEAD AND UNDERGROUND, INDICATED ON THESE PLANS HAVE
 BEEN LOCATED BY SURVEY AND FIELD OBSERVATION. THE LOCATION OF ALL
 EXISTING UTILITIES AND UNDERGROUND FACILITIES PRIOR TO CONSTRUCTION TO TAKE
 NECESSARY PRECAUTIONS IN ORDER TO PREVENT ALL EXISTING UTILITIES FROM DAMAGE
 OR DISRUPTION DURING CONSTRUCTION.

GRAPHIC SCALE

1" = 15'

0'

15'

30'

North

Alignment - 2

Number	Label	Length	Label/Chain	Station
L68		187.02	527' 26" 23.88'E	
C26		300.00	57' 28" N63.87'E	
C27		300.00	57' 28" N63.87'E	
L69		89.25	54' 06" 23.57'E	

REFERENCE BENCHMARK:
 THE BENCHMARK BEARING, ELEVATION, SURVEY INSTRUMENT AND LOCATION OF ALL BENCHMARKS SHOWN ON THESE PLANS ARE THE PROPERTY OF MCHS AND SHOULD BE PROTECTED BY LANDMARK SURVEYING, INC.

TABLE #1
 A.7. ALTIMETER BEING STAMPED CITY OF SULPHUR SPRINGS CONTROL POINT LOCATED NEAR THE INTERSECTION OF HUNTER STREET APPROXIMATELY 62 FEET NORTH OF THE POINT OF BEGINNING OF CURVE
 X = 28584.58
 Y = 28584.58
 Z = 4990.58
 Z = 48.71

TABLE #2
 A.7. ALTIMETER BEING STAMPED CITY OF SULPHUR SPRINGS CONTROL POINT LOCATED NEAR THE INTERSECTION OF HUNTER STREET APPROXIMATELY 59 FEET NORTH OF THE POINT OF BEGINNING OF CURVE
 X = 28584.58
 Y = 28584.58
 Z = 4990.58
 Z = 48.71

TABLE #3
 A.7. ALTIMETER BEING STAMPED CITY OF SULPHUR SPRINGS CONTROL POINT LOCATED NEAR THE INTERSECTION OF HUNTER STREET APPROXIMATELY 62 FEET NORTH OF THE POINT OF BEGINNING OF CURVE
 X = 28584.58
 Y = 28584.58
 Z = 4990.58
 Z = 48.71

TABLE #4
 A.7. ALTIMETER BEING STAMPED CITY OF SULPHUR SPRINGS CONTROL POINT LOCATED NEAR THE INTERSECTION OF HUNTER STREET APPROXIMATELY 62 FEET NORTH OF THE POINT OF BEGINNING OF CURVE
 X = 28584.58
 Y = 28584.58
 Z = 4990.58
 Z = 48.71

TABLE #5
 A.7. ALTIMETER BEING STAMPED CITY OF SULPHUR SPRINGS CONTROL POINT LOCATED NEAR THE INTERSECTION OF HUNTER STREET APPROXIMATELY 62 FEET NORTH OF THE POINT OF BEGINNING OF CURVE
 X = 28584.58
 Y = 28584.58
 Z = 4990.58
 Z = 48.71

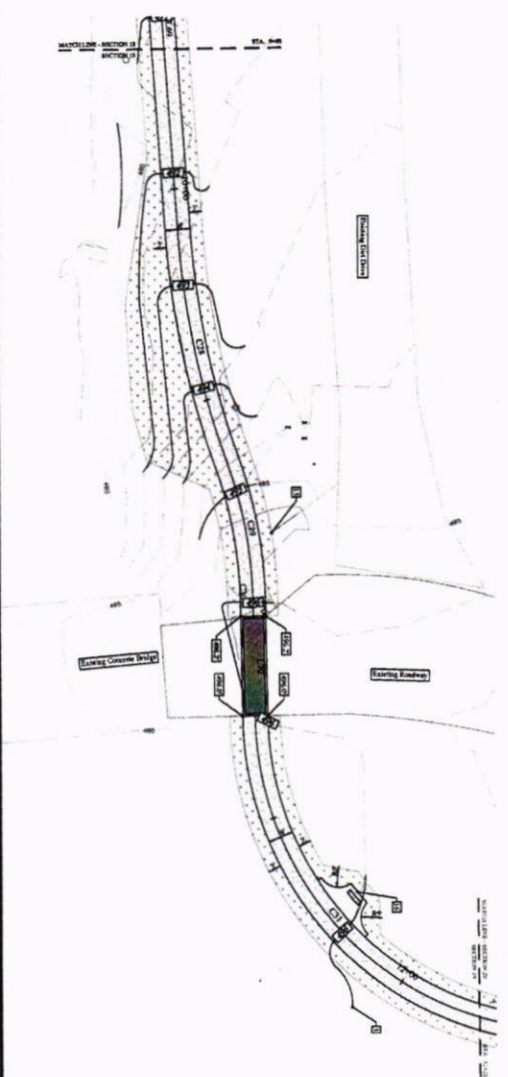
TABLE #6
 A.7. ALTIMETER BEING STAMPED CITY OF SULPHUR SPRINGS CONTROL POINT LOCATED NEAR THE INTERSECTION OF HUNTER STREET APPROXIMATELY 62 FEET NORTH OF THE POINT OF BEGINNING OF CURVE
 X = 28584.58
 Y = 28584.58
 Z = 4990.58
 Z = 48.71

TABLE #7
 A.7. ALTIMETER BEING STAMPED CITY OF SULPHUR SPRINGS CONTROL POINT LOCATED NEAR THE INTERSECTION OF HUNTER STREET APPROXIMATELY 62 FEET NORTH OF THE POINT OF BEGINNING OF CURVE
 X = 28584.58
 Y = 28584.58
 Z = 4990.58
 Z = 48.71

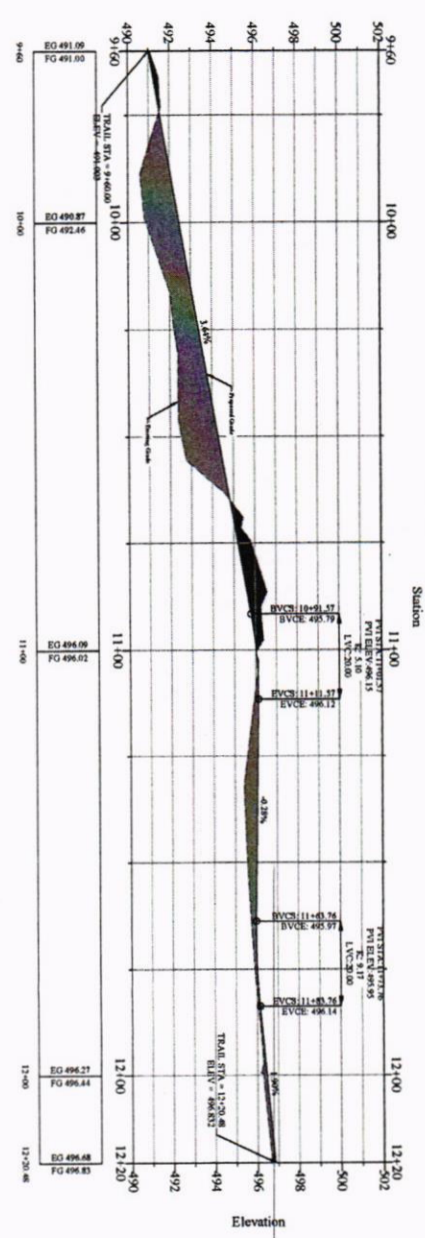
TABLE #8
 A.7. ALTIMETER BEING STAMPED CITY OF SULPHUR SPRINGS CONTROL POINT LOCATED NEAR THE INTERSECTION OF HUNTER STREET APPROXIMATELY 62 FEET NORTH OF THE POINT OF BEGINNING OF CURVE
 X = 28584.58
 Y = 28584.58
 Z = 4990.58
 Z = 48.71

TABLE #9
 A.7. ALTIMETER BEING STAMPED CITY OF SULPHUR SPRINGS CONTROL POINT LOCATED NEAR THE INTERSECTION OF HUNTER STREET APPROXIMATELY 62 FEET NORTH OF THE POINT OF BEGINNING OF CURVE
 X = 28584.58
 Y = 28584.58
 Z = 4990.58
 Z = 48.71

TABLE #10
 A.7. ALTIMETER BEING STAMPED CITY OF SULPHUR SPRINGS CONTROL POINT LOCATED NEAR THE INTERSECTION OF HUNTER STREET APPROXIMATELY 62 FEET NORTH OF THE POINT OF BEGINNING OF CURVE
 X = 28584.58
 Y = 28584.58
 Z = 4990.58
 Z = 48.71



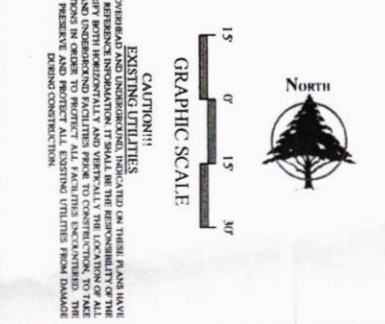
Alignment - 2 PROFILE



- LEGEND**
- 1. 1" ASPH. CONC. CURB AND GUTTER
 - 2. 1" ASPH. CONC. CURB AND GUTTER
 - 3. 1" ASPH. CONC. CURB AND GUTTER
 - 4. 1" ASPH. CONC. CURB AND GUTTER
 - 5. 1" ASPH. CONC. CURB AND GUTTER
 - 6. 1" ASPH. CONC. CURB AND GUTTER
 - 7. 1" ASPH. CONC. CURB AND GUTTER
 - 8. 1" ASPH. CONC. CURB AND GUTTER
 - 9. 1" ASPH. CONC. CURB AND GUTTER
 - 10. 1" ASPH. CONC. CURB AND GUTTER
 - 11. 1" ASPH. CONC. CURB AND GUTTER
 - 12. 1" ASPH. CONC. CURB AND GUTTER
 - 13. 1" ASPH. CONC. CURB AND GUTTER
 - 14. 1" ASPH. CONC. CURB AND GUTTER
 - 15. 1" ASPH. CONC. CURB AND GUTTER
 - 16. 1" ASPH. CONC. CURB AND GUTTER
 - 17. 1" ASPH. CONC. CURB AND GUTTER
 - 18. 1" ASPH. CONC. CURB AND GUTTER
 - 19. 1" ASPH. CONC. CURB AND GUTTER
 - 20. 1" ASPH. CONC. CURB AND GUTTER
 - 21. 1" ASPH. CONC. CURB AND GUTTER
 - 22. 1" ASPH. CONC. CURB AND GUTTER
 - 23. 1" ASPH. CONC. CURB AND GUTTER
 - 24. 1" ASPH. CONC. CURB AND GUTTER

Alignment - 2

Number	Station	Length	Start/End Elevation
L69	9+60.00	547.00	517.57
C28	200.00	55.86	517.57 to 523.43
C29	100.00	32.79	517.57 to 523.43
C30	500.00	3.77	517.57 to 523.43
L70	23.94	597.07	523.43
C31	75.00	103.37	549.19 to 544.82



LEGEND

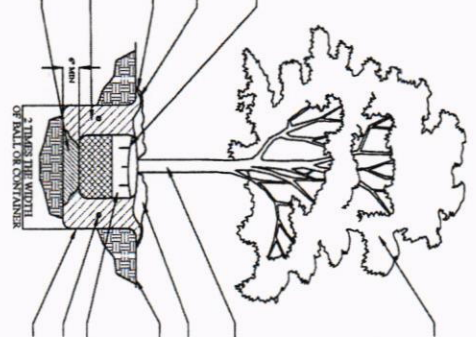
Symbol	Quantity
	3
	14
	11
	31
	20
	1

600 SQ FT OF 1" DEEP HARDWOOD BARK MULCH NEEDED IN PARKING BEDS

RECORDED POTENTIAL LANDSCAPE FOR THE STABILIZATION TO BE CONTACTED BY TEL: (800) 616-6144

WAITING BASIN MAX WIDTH: 2' BEYOND END OF HOLE MAX HEIGHT: 8" TO BE CONSTRUCTED W/ 18" ANTI-SLOTTED WATER TRENCH WITH FIRST 24 HRS. 2" OF MULCH EXTENDING OVER BERM

BACKFILL W/ TOPSOIL, MAX (AS PER SPECS) & PLANTINGS AT A 1:1 RATIO BY VOLUME IN 2" LAYERS. WATER DRAIN LAYER IN 2" LAYER. SEE TRENCH ELEVATION. COMPACTED 18" ANTI-SLOTTED WATER TRENCH TO BE INSTALLED TO ELEVATION OF TREE & ESTABLISHMENT PER SPECIFICATIONS



PRUNING: DO NOT HEAVILY PRUNE TREES AT PLANTING. PRUNE ONLY BRANCHES THAT ARE DEAD OR DANGEROUS. LEADERS & BRANCHES SHOULD REMAIN NATURAL FORM OF TREE. SPEC. V. W/ 18" T. PROTECT AS PER MHS. INSTR. F. FOLIAGE IS PRESENT

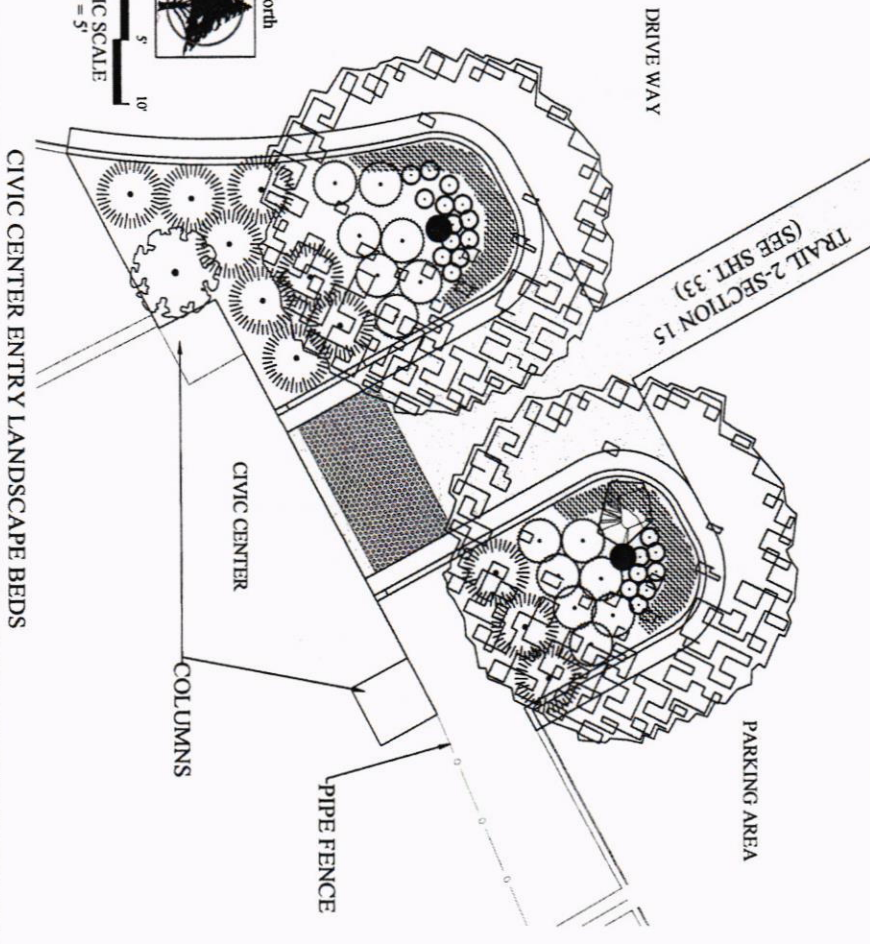
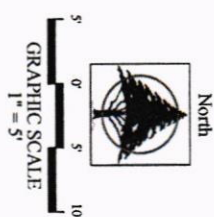
SET PLANTS IN CENTER OF PIT. NO SOIL SHALL BE PLACED ON TOP OF BALL, MULCH ONLY.

2" LAYER OF DARK MULCH - DO NOT PLACE MULCH IN CONTACT WITH THE TREE

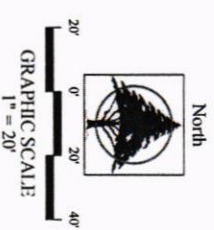
FRESH GRADE

REMOVE BUILDUP FROM TOP 1/2 OF ROOT BALL. REMOVE EXCESS MULCH AS PER SPECS. SCARIFY SIDES OF HOLE TO BREAK GLAZE. HOLE TO BE CIRCULAR W/ VERTICAL SIDES.

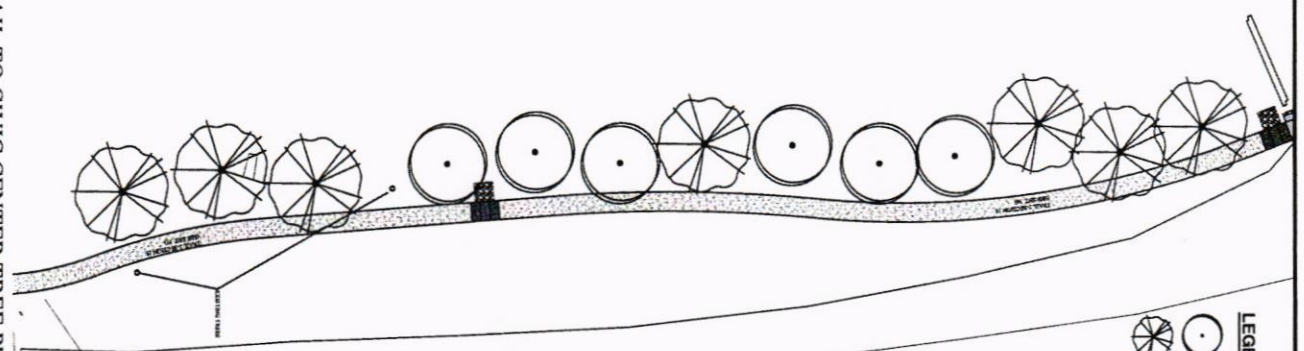
TREE PLANTING DETAIL
NOT TO SCALE



CIVIC CENTER ENTRY LANDSCAPE BEDS



TRAIL TO CIVIC CENTER TREE PLANTINGS



SEE SHT. 50 FOR TREE PLANTING DETAIL.

LEGEND

Symbol	Quantity
	4
	7

**LANDSCAPE PLAN
CIVIC CENTER AREA
CROSTOWN TRAIL
CITY OF SULPHUR SPRINGS, TEXAS**

MHS
PLANNING & DESIGN, LLC



212 West Ninth Street
Tyler, Texas 75701
903-597-6600
903-597-0517 Fax
TBPE No. F-14571

50 OF 56
DRAWN: MHP
CHECKED: MHS
DATE: JUNE 2017
SCALE: AS SHOWN
JOB NO.: 16-017

— MAJOR PIPE CLASS 300 PVC
 1-1/2" INCH SIZE
 LATERAL PIPE CLASS 300 PVC
 (SIZED AS SHOWN)
 HUNTER ELECTRONIC REMOTE CONTROL VALVE
 ICV-1510 ISO
 HUNTER MP 2000
 PRESSURE = 40 PSI RAJMS = 19 FEET
 FLOW = 40 - 147 GPM
 HUNTER PCH MODEL 10
 PRESSURE = 40 PSI
 FLOW = 10 GPM
 DCA BACKFLOW PREVENTER
 HOSE BIB W/ VALVE BOX
 HUNTER HUB SERIES SOLAR PANEL CONTROLLER
 XCH-600-2529XX1

AS SHOWN

EXISTING ON-SITE

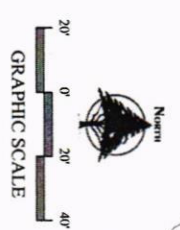
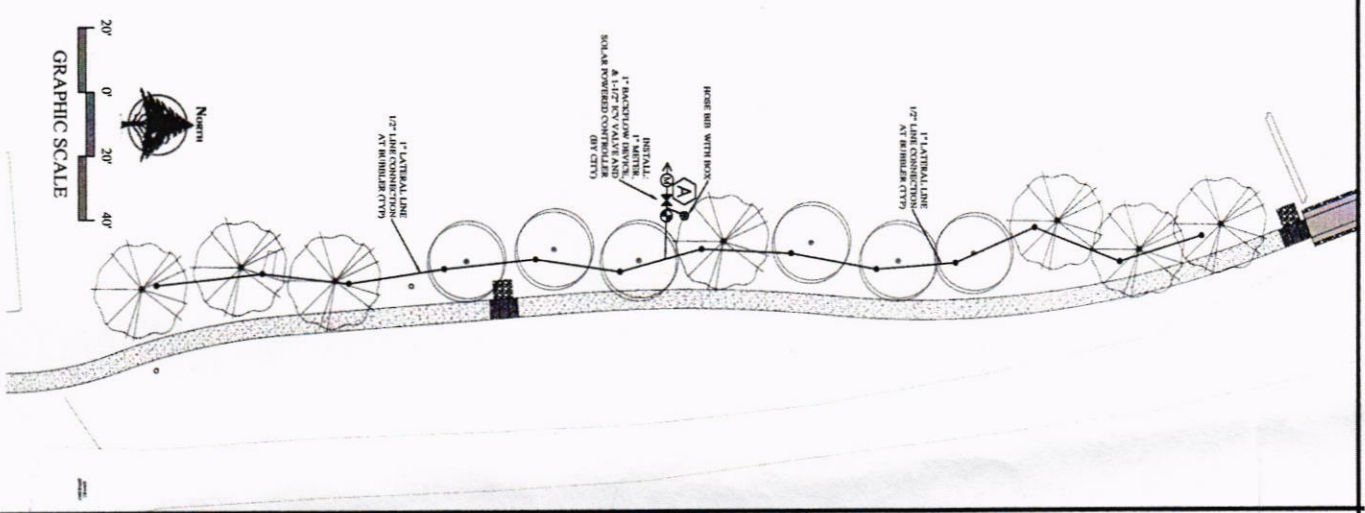
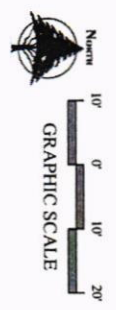
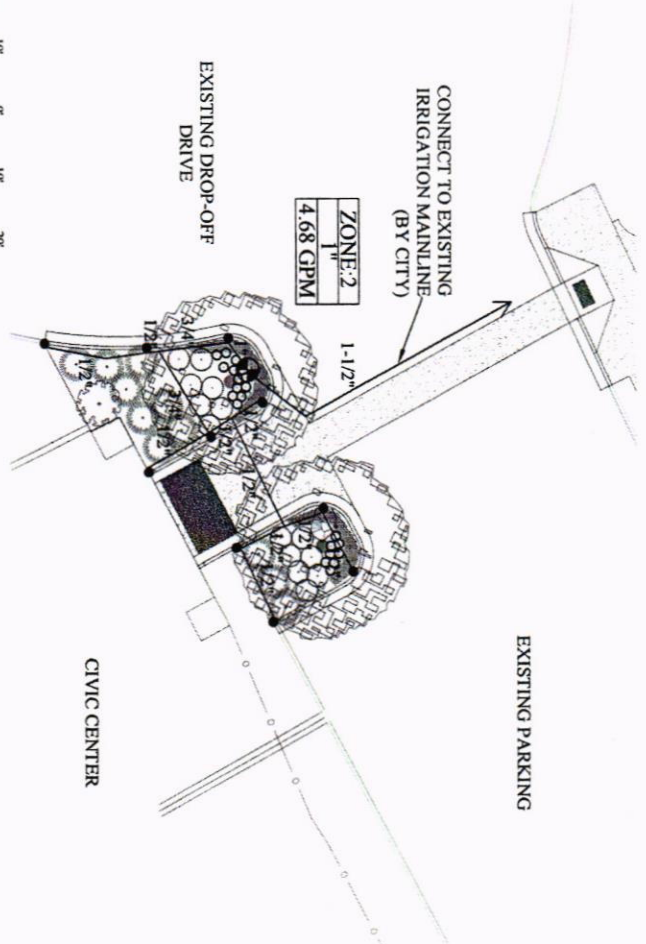
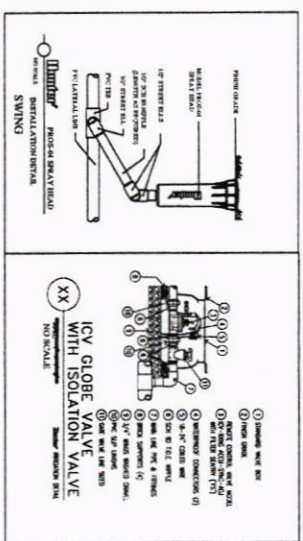
- 1
- 10
- 13
- 1
- 1
- 1

GENERAL NOTES

1. SYSTEM LAYOUT OR ASSIGNED AS BY THE PROPERTY OWNER. NO WATER LINES CROSS THE PROPERTY BOUNDARY. NOTIFY CONSULTANT IF NO PIPES ARE AVAILABLE AFTER EXISTING SYSTEM IS EXPOSED.
2. SPRINKLER AND VALVE LOCATIONS ARE TO SCALE PER LOCATIONS ARE AS SHOWN.
3. ALL EXISTING LINES SHALL BE SET PERPENDICULAR TO FINISHED GRADE UNLESS OTHERWISE SPECIFIED.
4. ELECTRICAL PIPING AND ADJUST AS NECESSARY.
5. IRRIGATION CONTROLLER SHALL BE PLACED IN THE LOCATION SHOWN ON PLAN. CONTRACTOR TO STRIKE CONTROLLER ON-GROUND PERIOD TO INSTALL.
6. EXCEPT AS OTHERWISE PROVIDED, THE CONTRACTOR SHALL PROTECT ALL EXISTING UTILITIES AND STRUCTURES. THE CONTRACTOR SHALL BE RESPONSIBLE FOR OBTAINING ALL NECESSARY PERMITS AND NOTIFICATION TO THE CITY OF SULPHUR SPRINGS FOR THE WORK.
7. CONTRACTOR SHALL NOTIFY PERMITS UTILITY COMPANIES AS SOON AS POSSIBLE TO VERIFY THE LOCATION & CONDITION OF ALL UTILITIES AND BE RESPONSIBLE FOR DAMAGE TO ANY UTILITIES.
8. ALL THIS PROJECT THE WORK FROM DAMAGE & THREAT & REPAIRS SHALL BE OBTAINED ON OTHER PARTS UNTIL THE WORK IS ACCEPTED IN WRITING BY THE OWNER.
9. CONTRACTOR SHALL NOT WILLFULLY INSTALL THE SPRINKLER AS SHOWN ON THE DRAWINGS WHEN IT IS OBSERVED IN THE FIELD THAT CONSTRUCTION SHALL BE DEVIATED FROM THE PLAN. THE CONTRACTOR SHALL BE RESPONSIBLE FOR NOTIFYING THE OWNER OF ANY DEVIATIONS AND THE CONTRACTOR SHALL BE RESPONSIBLE FOR ANY REVISIONS NECESSARY.

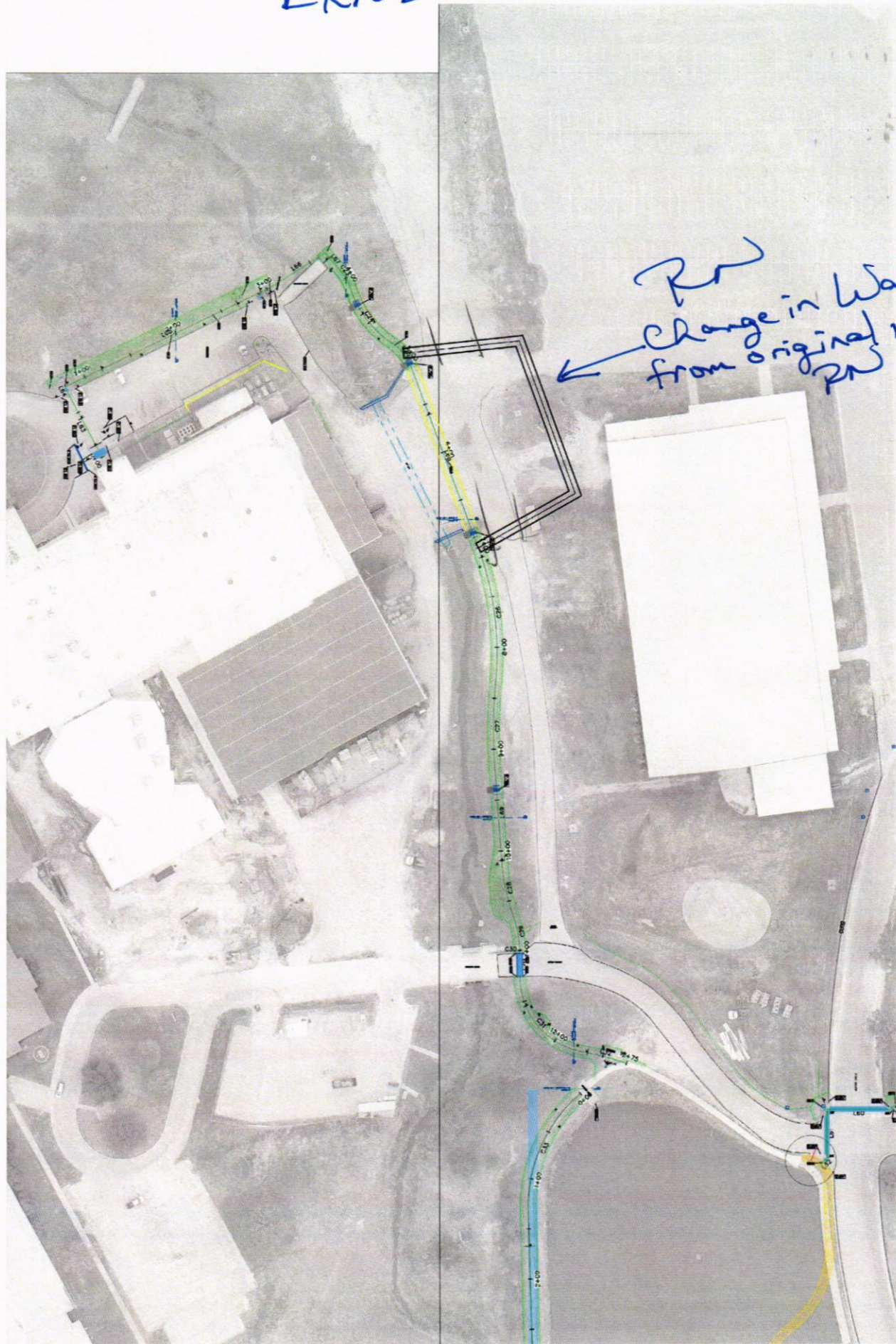
CAUTION!!!

EXISTING UTILITIES, OVERHEAD LINES, AND OTHER OBSTRUCTIONS ON THESE PLANS HAVE BEEN LOCATED FROM RESEARCH INFORMATION. IT SHALL BE THE RESPONSIBILITY OF THE CONTRACTOR TO VERIFY BOTH HORIZONTALLY AND VERTICALLY THE LOCATION OF ALL UTILITIES AND STRUCTURES. THE CONTRACTOR SHALL PROTECT ALL UTILITIES ENCOUNTERED. THE CONTRACTOR SHALL PRESERVE AND PROTECT ALL EXISTING UTILITIES FROM DAMAGE DURING CONSTRUCTION.



<p>IRRIGATION PLAN CIVIC CENTER LANDSCAPE CROSTOWN TRAIL CITY OF SULPHUR SPRINGS, TEXAS</p>	<p>MHS PLANNING & DESIGN, LLC</p>		<p>212 West Ninth Street Tyler, Texas 75701 903-597-6606 903-597-0517 Fax TBPE No. F-14571</p>
<p>DRAWN: HNR CHECKED: MHS DATE: JUNE 2017 SCALE: AS SHOWN JOB NO.: 16-017</p>	<p>53 OF 56</p>		

Exhibit "B"



Change in Walkway
from original map.